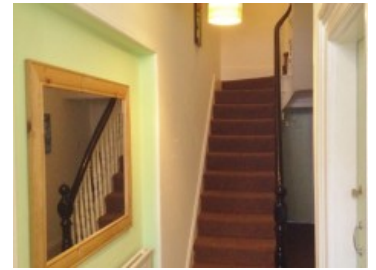




Southern Terrace, Mutley, Plymouth

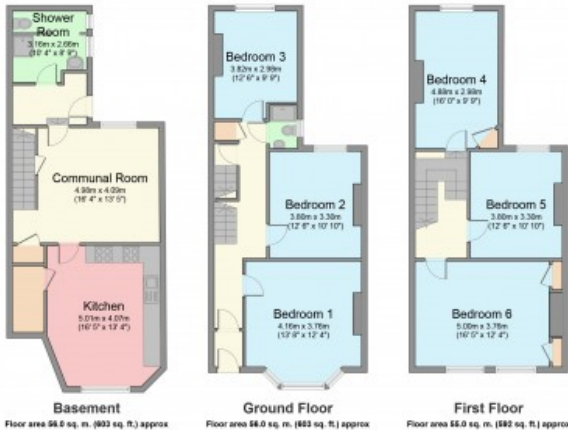
6 Bedroom Student Property

FROM
£132.00
PPPW inc. bills



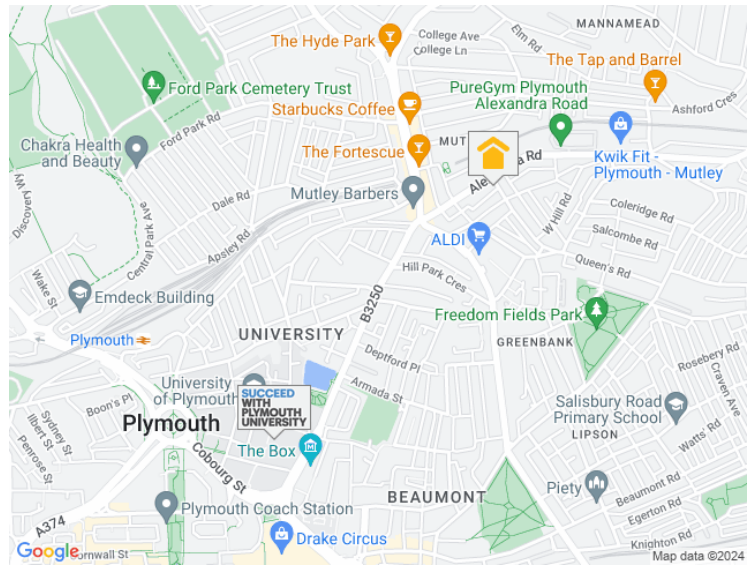
44 Southern Terrace

Total floor area 167.0 sq. m. (1,798 sq. ft.) approx.



Floor plans are for identification purposes only. All measurements are approximate.

Created using Vision Publisher™



This large six bed student property has just been refurbished with brand new kitchen, decorated throughout with new carpets.

There is a massive lounge and a hugely spacious kitchen; providing fantastic communal space.

Situated close to Mutley, this house is conveniently located for both the University, City Centre and Mutley Plain.

Room Availability

Room #1	£132.00 PPPW inc. bills
Room #2	£132.00 PPPW inc. bills
Room #3	£132.00 PPPW inc. bills
Room #4	£132.00 PPPW inc. bills
Room #5	£132.00 PPPW inc. bills
Room #6	£132.00 PPPW inc. bills

www.plymouthstudentaccommodation.com



A Home After Halls, 11-12 Gibbon Lane, Plymouth, Devon, PL4 8BR
contact@ahahlets.co.uk

01752 600 485