



A HOME AFTER HALLS^{LTD}

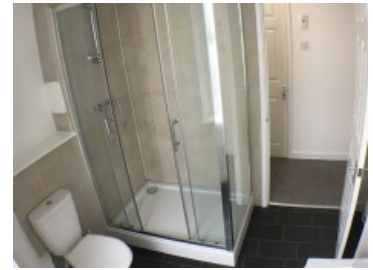
STUDENT LETTINGS



Ermington Terrace, Mutley, Plymouth

8 Bedroom Student Property

FROM
£130.00
PPPW inc. bills



31 Ermington Terrace
Total floor area 214.0 sq. m. (2,303 sq. ft.) approx



Ground Floor
area 72.0 sq. m. (775 sq. ft.) approx



First Floor
Floor area 71.0 sq. m. (764 sq. ft.) approx



Second Floor
Floor area 71.0 sq. m. (764 sq. ft.) approx



A fantastic eight bedroom end terraced property.

The property has four new shower rooms, a huge lounge, separate kitchen, utility area and its just had brand new carpets fitted.

All of the bedrooms in this house are very spacious.

The front garden has been fenced off to provide a private garden and there is also a rear courtyard.

Room Availability

Room #1	£130.00 PPPW inc. bills
Room #2	£130.00 PPPW inc. bills
Room #3	£130.00 PPPW inc. bills
Room #4	£130.00 PPPW inc. bills
Room #5	£130.00 PPPW inc. bills
Room #6	£130.00 PPPW inc. bills
Room #7	£130.00 PPPW inc. bills

1 Additional Rooms Available

www.plymouthstudentaccommodation.com

A Home After Halls, 11-12 Gibbon Lane, Plymouth, Devon, PL4 8BR
contact@ahahlets.co.uk

01752 600 485

