



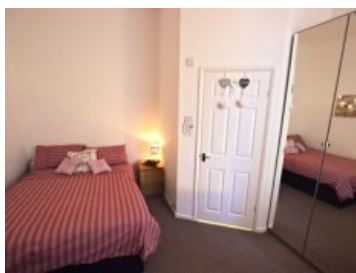
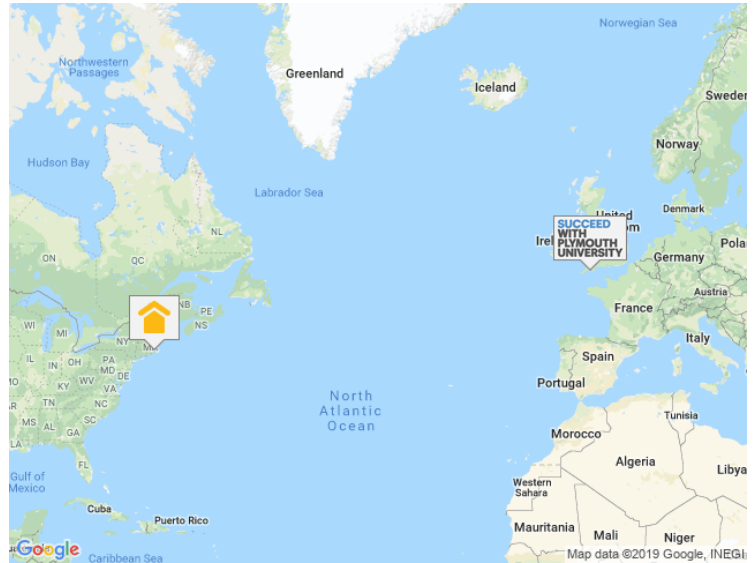
# A HOME AFTER HALLS<sup>LTD</sup>

STUDENT LETTINGS

## Tothill, Plymouth

### 9 Bedroom Student Property

FROM  
**£112.00**  
PPPW inc. bills



Beautifully presented and spacious student accommodation situated close to the University and city centre and overlooking Tothill park. The property comprises of nine en-suite bathrooms, open plan kitchen dining and communal area, and off road parking for two cars. There's a separate communal bathroom and spare room for use however you please.

Viewings highly recommended.

### Room Availability

Room #5

£112.00 PPPW inc. bills

[www.plymouthstudentaccommodation.com](http://www.plymouthstudentaccommodation.com)

A Home After Halls, 11-12 Gibbon Lane, Plymouth, Devon, PL4 8BR  
contact@ahahlets.co.uk

**01752 600 485**